

HIPH

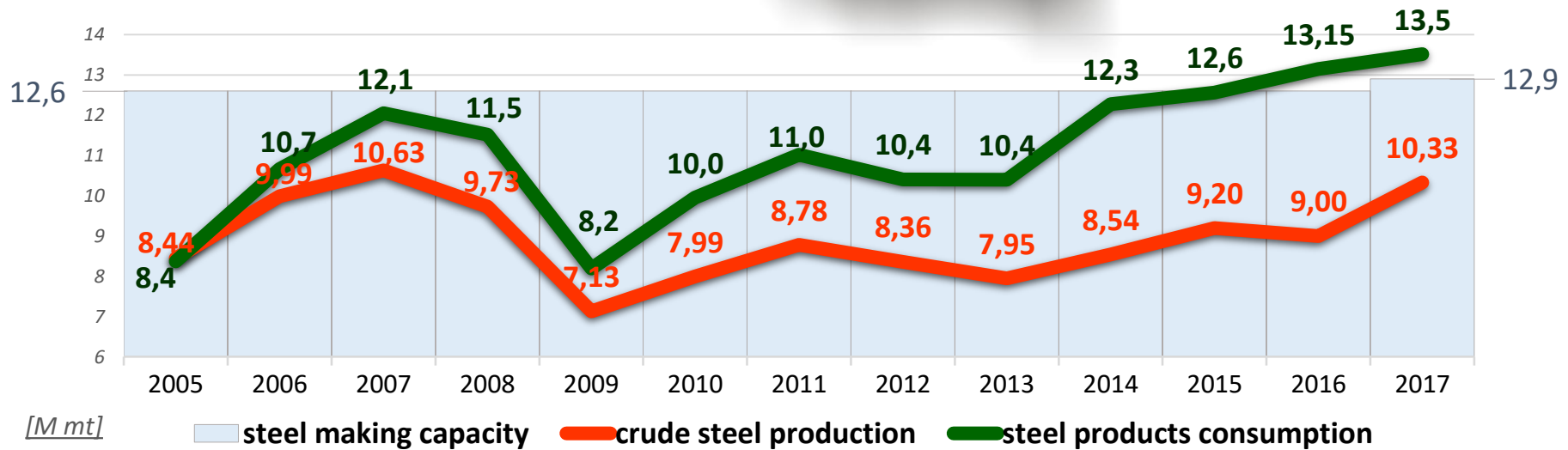
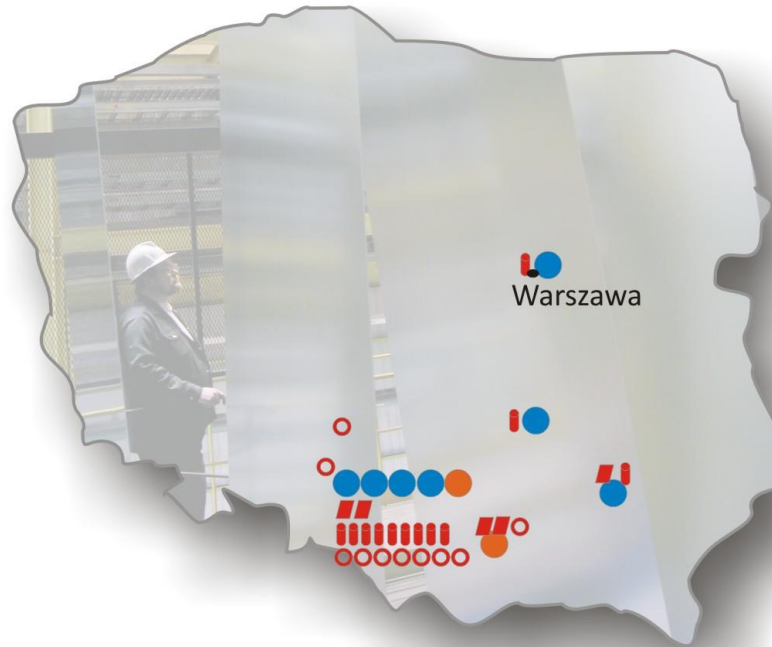
SETKÁNÍ OCELÁŘSKÉ UNIE

*Praha
12. Června 2018*

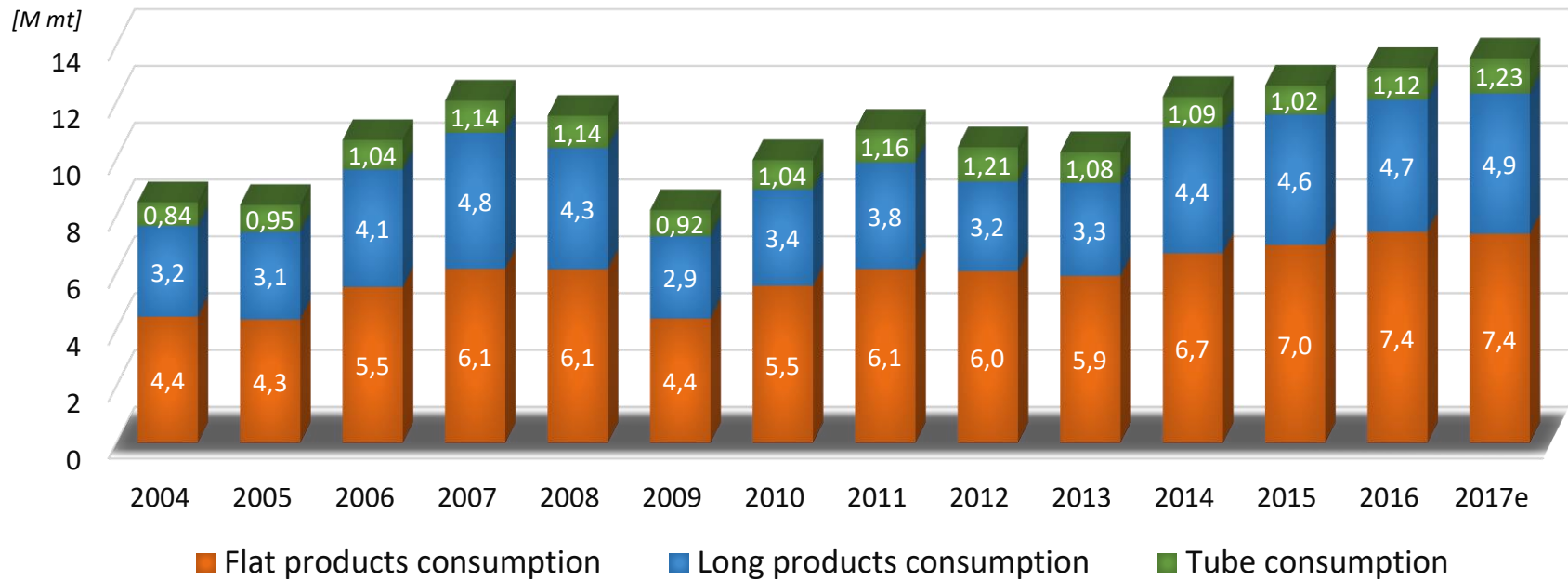
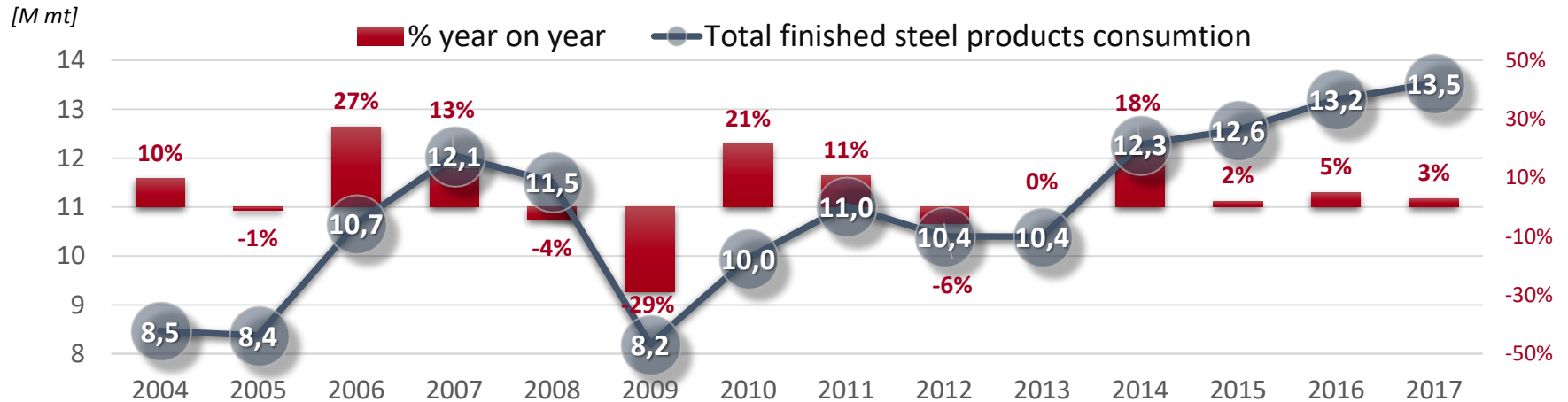
*Mirostaw Motyka, Council Chairman
Hutnicza Izba Przemysłowo-Handlowa*

Steel industry in Poland

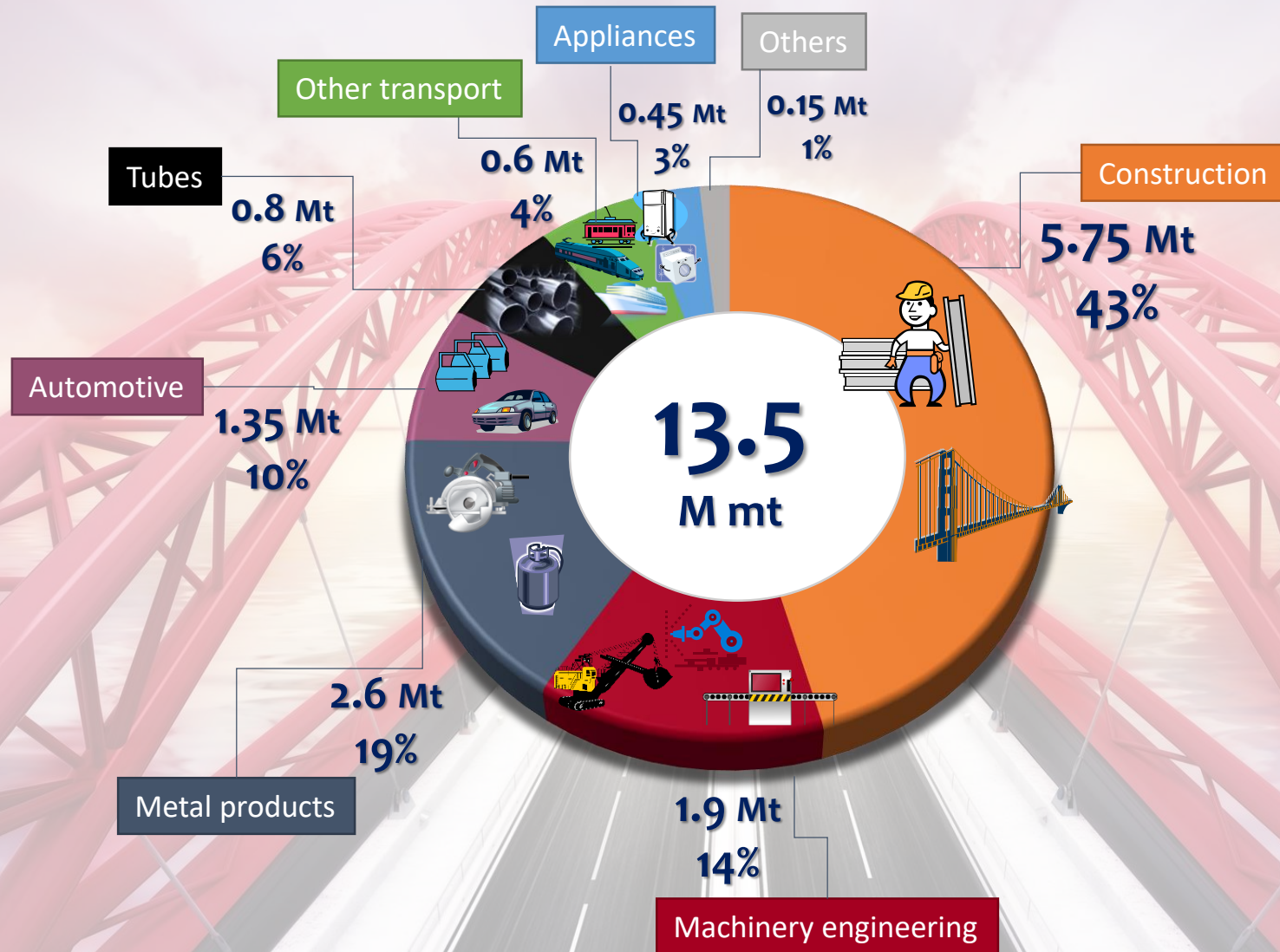
- 2 BOF steel plants (iron ore based)
- 7 EAF plants (scrap based)
- ▮ 5 flats rollong mills
- ▮ 12 longs rolling mills
- 10 tubular and hollow sections mills

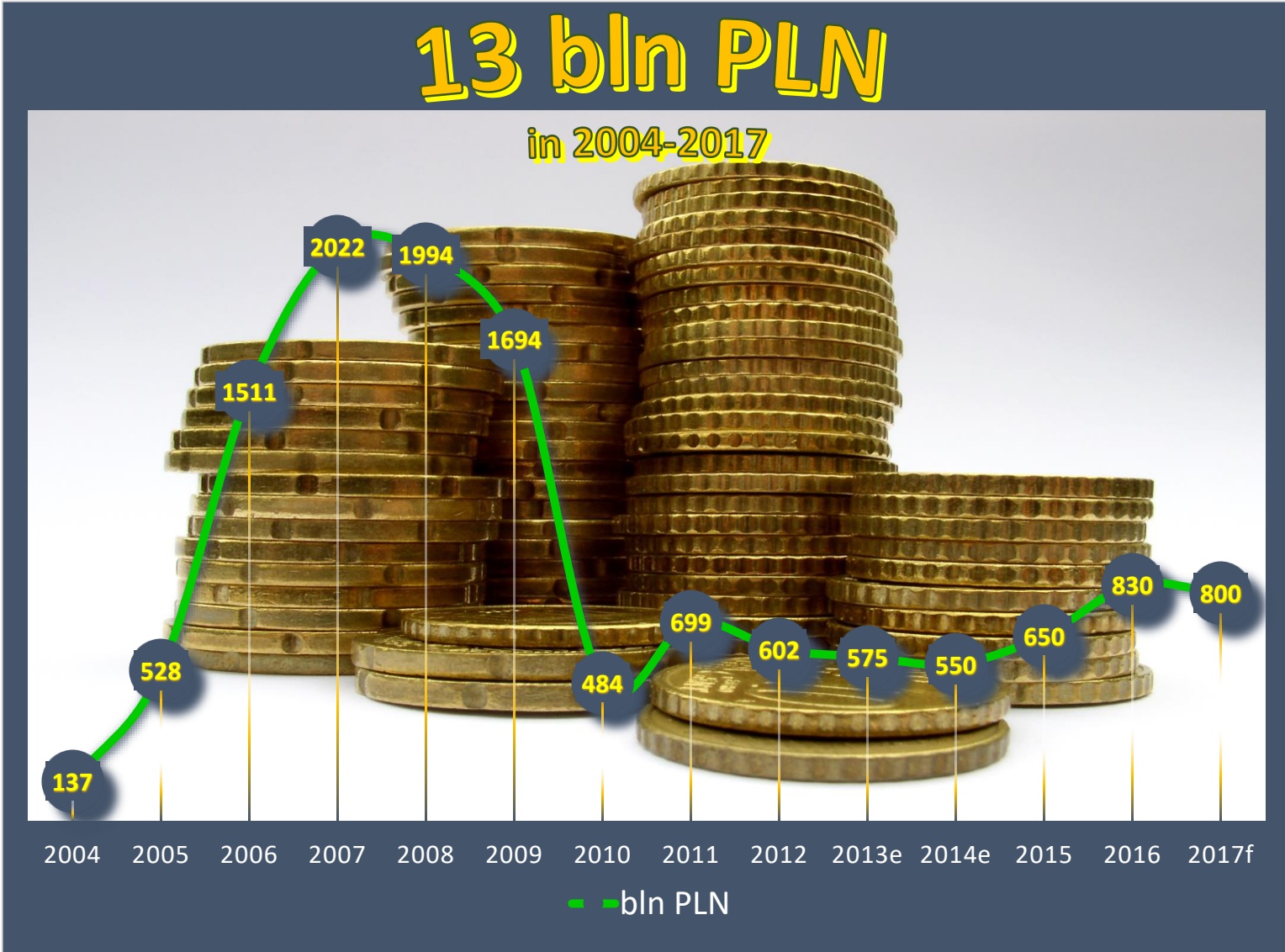


Steel consumption in Poland



Steel-consuming sectors in Poland in 2017





Steel investments in Poland since 2016



*Blast furnance in Cracow
175 mln PLN*



*Hot rolling mill
in Cracow - 230 mln PLN*



*HDG line
in Cracow - 95 mln PLN*



*Zdzieszowice coke plant
- 205 mln PLN*



*CC line in Zawiercie
ok. 150 mln PLN*



*Tube mill in Gliwice
120 mln PLN*



*Heat and power plant
in Cracow - 350 mln PLN*



*Dust extraction system in
Dąbrowa Górnicza
100 mln PLN*



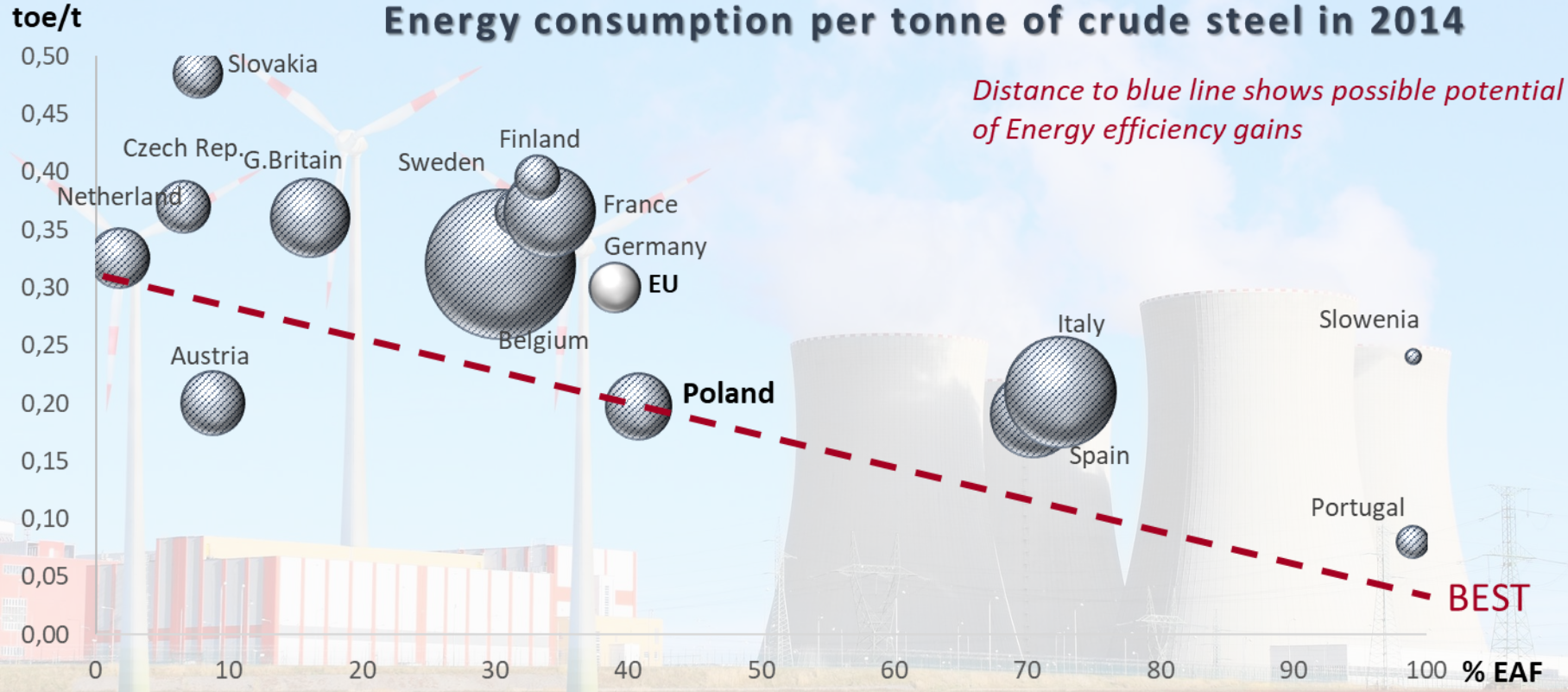
*Sinter plant in Dąbrowia
Górnicza - 160 mln PLN*



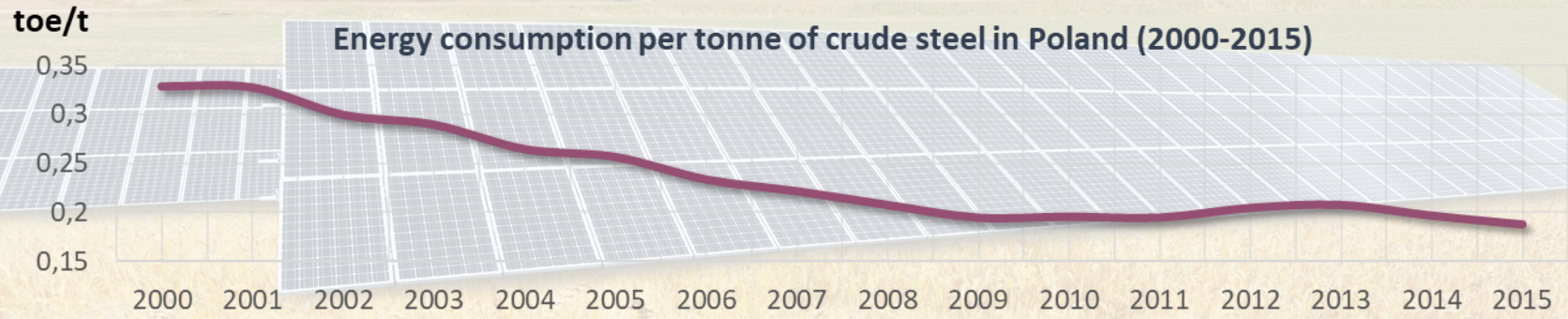
*Wire rod mill
in Sosnowiec - 120 mln PLN*

Energy efficiency in steel making

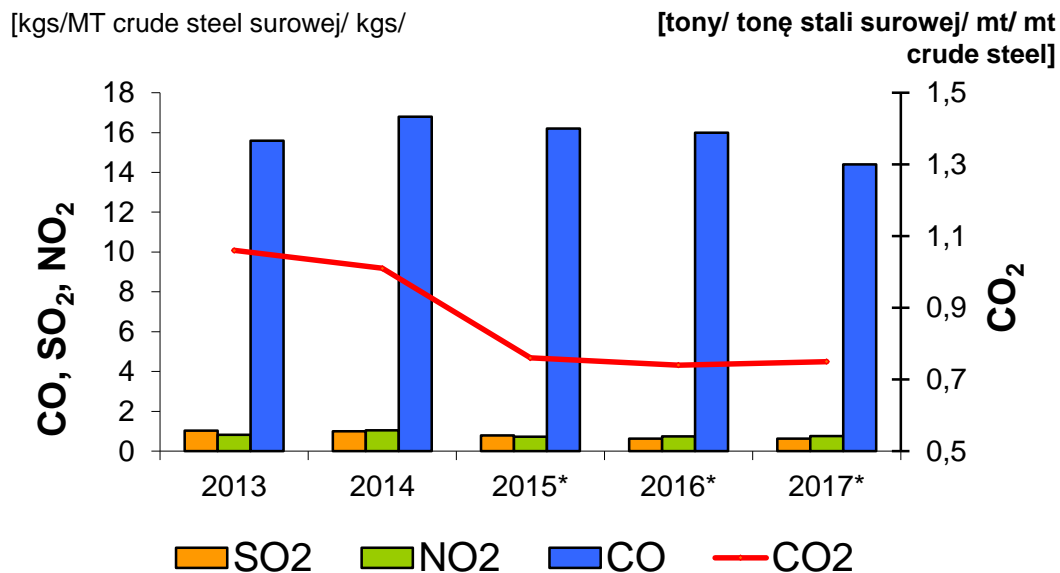
Energy consumption per tonne of crude steel in 2014



Energy consumption per tonne of crude steel in Poland (2000-2015)



SO₂, NO₂ and CO [kg] and CO₂ [ton] emissions per MT crude steel



| 2017 Y | [t] | per tonne of crude steel | |
|-------------------|-----------|--------------------------|----|
| Dust emissions | 4 938 | 0,48 | kg |
| Gas emissions: | 7 955 076 | 0,77 | t |
| SO ₂ | 6 481 | 0,63 | kg |
| CO ₂ * | 7 792 310 | 0,75 t | t |
| CO | 148 851 | 14,41 | kg |
| Nox | 7 715 | 0,75 | kg |
| hydrocarbons | 16 | 0,00 | kg |

* Without TAMEH

LRF

Linear Reduction Factor redukciji (LRF) down to 1,74 % from **2,2 %**

FM

Modernisation Fund (FM) - 2% of the total allowances— modernisation of energy systems in low-income EU countries (not for coal-based projects).

FI

Innovation Fund (FI) - max 500 mln allowances— support for CCS, CCU, RES technologies.

CL

Carbon Leakage (CL) -100% free allowances for exposed sectors, 30% for heating to 2030, 30% for not-exposed sectors till 2026

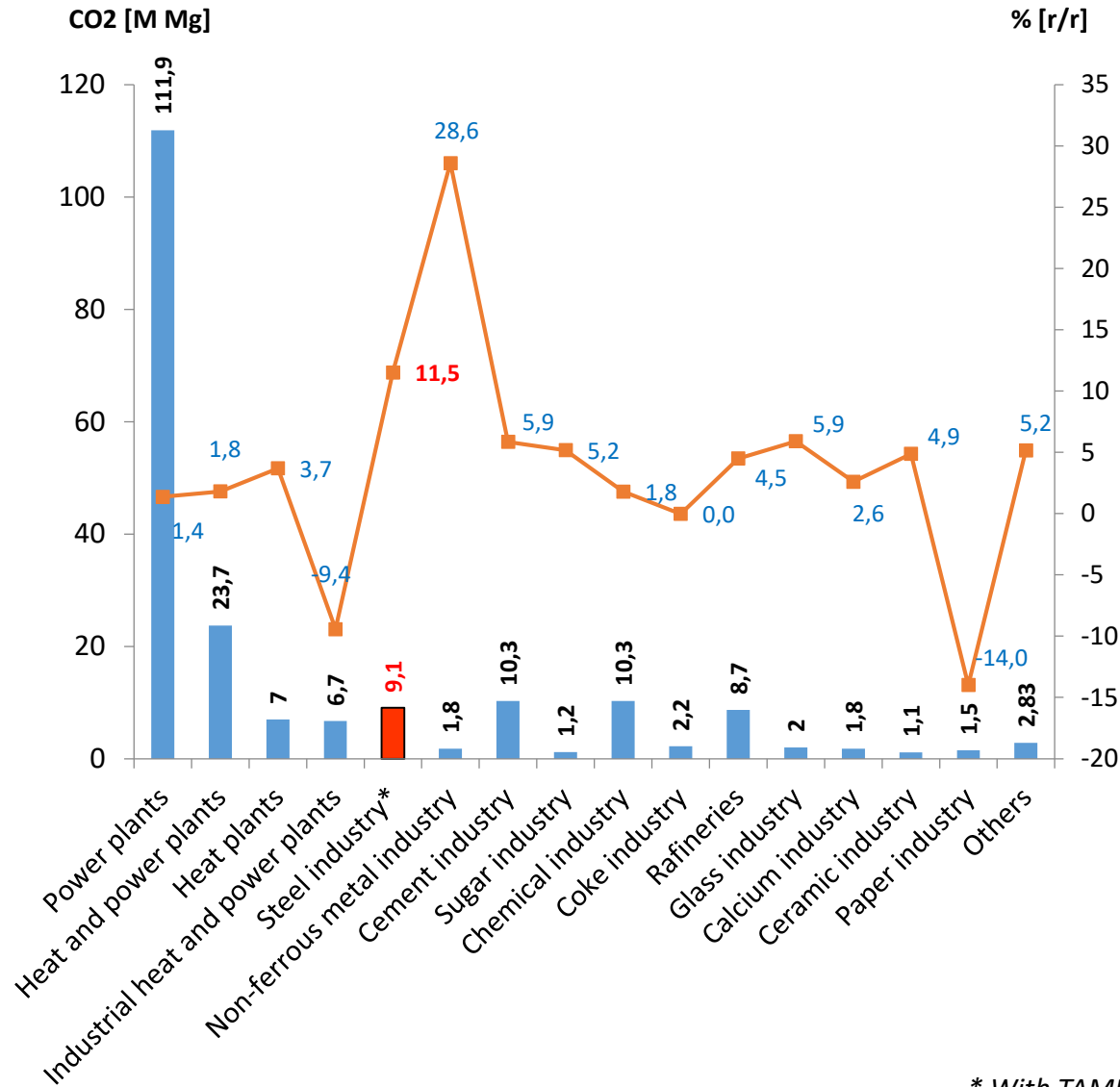
ETS

Auctioning pool **57% , and 43%** for **free allocations**.
Auctioning poll may be reduced 3% for free allowances if CSCF

Rek

Indirect compensation for industry are decided by MS. Funds for this must not exceed 25% of auctioning revenues.

CO₂ emissions in 2017



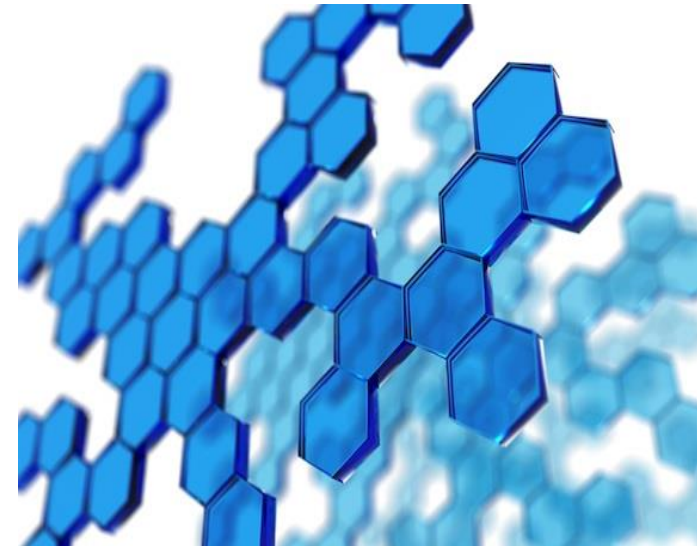
* With TAMEH



The REACH Regulation applies directly, without the need to implement it into Polish law. It entered into force on June 1, 2007 and replaces or changes several dozens of Community acts to date. REACH applies to the territory of the European Union, Norway, Iceland and Liechtenstein. The European Chemicals Agency in Helsinki supervises the implementation of the regulation. December 1, 2010 - full registration for the substances: - CMR cat. 1 and 2 in an amount of at least 1 ton / year – hazardous for the environment with assigned return R50 / 53 in the amount of 100 tons/year and other substances in the amount of at least 1000 tons/year

Steel makers registered following waste:

- EAF slags,
- BF slags,
- rolling scale,
- BOF dust.





- EU ETS phase IV



- EC Winter package: „Clean Energy for all Europeans”



- BREF Ferrous Metals Processing



- Impact of the classification and labeling of Metallic Cobalt



- Circular Economy Package
 - Extended Producer Responsibility (EPR)
 - waste regulation
 - solid contamination



- Water Law



- Clean Air For Europe programme (CAFE)

Děkuji za Vaši pozornost!